

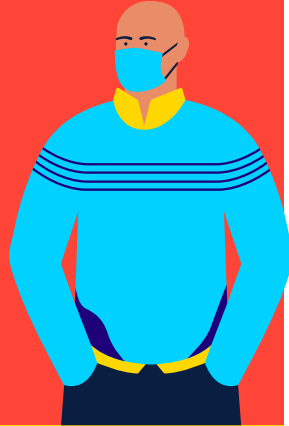
Jingle Bell Rock Drive-In Safety Measures

On arrival at the venue, vehicles will be directed to socially distanced car spaces. Please read the following before entry to ensure your safety and the safety of others.

Social distancing measures

If you leave your car, please keep at least 2m away from each other.

Please do not attend if you have had any suspected contact with Covid in the last 14 days.



Seating

If the weather is fine, you may bring your own seating and sit next to your car.



Protective equipment

Please bring your own face masks and hand sanitiser.

Additional hand sanitiser and anti-bacterial wipes will be provided in the toilet area. Please wipe touch points after use.



Waste

On entering the Drive-In you will be issued with a Goody Bag which contains a bin liner.

Please use this to dispose of hand wipes/tissues/food/drink containers and any other waste and take this home with you to dispose of responsibly - Thank you.



Sanitise Regularly

Please sanitise your hands frequently and thoroughly.

We also recommend following the latest NHS guidance on how to avoid catching and spreading Covid.



Together, let's do our part to keep each other healthy.

